

2020

LAUNCH



ARISTO 500ix

Extreme Performance for
Extreme Environments.

PAGE // 4

OK GOLDROX

Strike Gold with
OK GoldRox.

PAGE // 10



SAVAGE

Form, Function and Value.

PAGE // 9



REBEL EMP 205ic

Yes, AC TIG Welding Too!

PAGE // 12



ROGUE

Unprecedented Stick
Performance.

PAGE // 14



AND MORE INSIDE!

WE SHAPE THE FUTURE, BRAND STRATEGY & ESAB PORTFOLIO BRANDS.



As fabricators and fabricators' friends, we do some pretty epic work. And none of it would be possible without each and every one of us – the welders, the distributors, the engineers, the tools of the trade.

We are committed to, and driven by shaping the future of our industry. It is what we have always done. We take pride in combining our knowledge and experience with high performing high quality products with a hunger to innovate and improve. Our goal is to make our customers great. Everyday we aim to deliver solutions that not only improve customers productivity but also brings peace of mind with results that can be trusted in all situations. If our customers run into problems, they know we always have their back.

This is a journey, not an end state. As our industry moves into the next day of age we are ready for the challenge wherever it will take us.

By connecting people, product and technology we evolve. Together, **we shape the future** of welding and cutting.

VICTOR
AN ESAB BRAND

**THERMAL
DYNAMICS**
AN ESAB BRAND

TWECO
AN ESAB BRAND

STOODY
AN ESAB BRAND

ARCAIR
AN ESAB BRAND

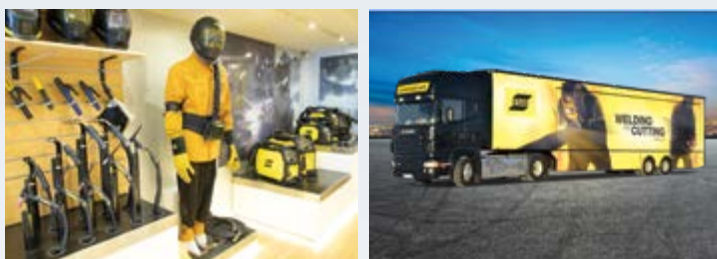
TURBOTORCH
AN ESAB BRAND

EXATON
AN ESAB BRAND

AMI
AN ESAB BRAND

HKS
PROCESSTECHNIK
AN ESAB BRAND

ESAB ON THE MOVE.



The ESAB Demobus travels throughout Europe each year and unfolds to create a mobile showroom at various locations. This one-stop-shop provides access to the complete range of welding and cutting products, processes and complete solutions from ESAB.

The Demobus is stocked with a extensive portfolio of products designed for various applications, including welding, plasma cutting, filler metals, automation and PPE. In addition, you are able to experience first-hand live welding and cutting demonstrations.

The mobile showroom is equipped to meet all visitor fabrication needs – from home hobbyist welding machines to welding automation for large businesses. With ESAB application experts with technical knowledge of the equipment and segments at hand, the Demobus is the perfect opportunity to truly experience what ESAB has to offer.

Join ESAB to see how, together, we can shape the future of welding and cutting.

- Experience live welding and cutting demonstrations
- Explore a wide range of complete solutions, including welding machines, cutting machines, filler metals, PPE and automation
- Learn about total solutions for segment-based challenges
- Personal access to ESAB's experienced team of application experts to answer your technical questions
- Learn more about how you can maximise productivity and profitability with ESAB

TABLE OF CONTENTS

INTRODUCTION	2 – 3
ARISTO® 500ix WITH ROBUST FEED PULSE AND U6	4 – 5
PSF MIG TORCHES	6
SR & XCT TIG TORCHES	7
DIGITAL SOLUTIONS	8
SAVAGE A40 HELMET	9
OK GOLDROX™ AND COREWELD	10 – 11
REBEL™ 205ic AC/DC	12 – 13
GO ROGUE	14 – 15
CUTMASTER® 40	16 – 17
VERSOTRAC/VERSOARC	18 – 19
EXATON	20

EXTREME PERFORMANCE FOR EXTREME ENVIRONMENTS.

For those who need enhanced multi-process welding capabilities and portability in harsh industrial environments, ESAB now introduces the **Robust Feed Pulse** and **Robust Feed U6** and pairs them with the new **Aristo® 500ix** power source.

PULSED MIG AND MORE

If you wanted the productivity benefits of pulsed MIG but hesitated because of a demanding application, relax — the heavy industrial Aristo 500ix can handle it. Use its pulsed MIG capabilities to:

- Greatly reduce or eliminate weld spatter and post-weld clean-up.
- Control bead appearance and profile, an important factor when customers value good-looking weld beads.
- Enable all-position welding while maintaining reasonably high deposition rates and travel speeds.
- Weld thinner materials without burn-through or warping, increasing first-pass yield and reducing scrap rates.
- Standardise on a single, larger diameter aluminium wire for welding a broad range of metal thicknesses.
- Better manage heat input to preserve mechanical properties while also increasing travel speed, especially on stainless steel.

POWERFUL AND FLEXIBLE

Aristo 500ix offers maximum output of 500A/39V at 60% duty cycle. When paired with Robust Feed, you can weld with solid wire up to 2.0 mm and cored wire up to 2.4 mm. Note these feeders offer a 50 mm dinse terminal on the back for connecting an MMA electrode holder, while the Robust Feed U6 also enables welding from the wire feeder.



BUILT TOUGH

Housed in a weather-proof IP23-rated case, the Aristo 500ix has a cooling design that isolates electronics from dust, oil, metal shavings and other airborne contaminants. Thick, double bent metal side panels provide impact protection, yet the design enables easy access for service and maintenance. Its ergonomic handles are crane rated. The optional trolley also features dedicated crane lifting points, as well as a torch holder and large cable holder for better organisation.

Key Specifications	
Duty Cycle (MIG/MAG, MMA & TIG)	500A/39V at 60% 400A/39V at 100%
Weight	55.5 kg
Enclosure Class	IP23



JOBSITE TOUGH. TOTAL CONTROL.

Robust Feed Pulse and Robust Feed U6 deliver all the benefits of a premium benchtop feeder in a package that offers the industry's only IP44 rating — for superior protection against dirt, mud, splashes and even heavy rain. Add in best-in-class ergonomics and lifting options, and you get a wire feeder that performs above all others.

PRODUCTIVITY BOOSTER

Robust Feed Pulse/U6 promote better weld quality and enhance weld bead appearance through precision control over every aspect of MIG/MAG welding.

Robust Feed Pulse control functions are easy to find, set and fine-tune, while the Robust Feed U6 offers the ultimate combination durability and advanced functionality, including parameter limits for better repeatability.

BETTER RESULTS, FASTER.

From arc start to weld termination, these feeders offer a full suite of controls that help less experienced or moderately skilled welders improve quality and productivity. Icons, push buttons and digital displays simplify use and eliminate language barriers. To begin pulsed welding, operators simply select the synergic line. The system then provides optimum dynamic arc control to maintain consistent penetration and weld bead appearance, automatically adjusting for variations in arc length and wire feed speed.



ON A ROLL

An optional wheel kit attaches to the bottom or the side of the feeder, and also notice the ability to rotate the digital display for vertical or horizontal orientation.

Panel Functions		
	Robust Feed Pulse + Aristo 500ix	Robust Feed U6 + Aristo 500ix
Gas Flow Meter	■	■
Heat Kit	■	■
QSet™	■	■
Amperage Target Setting	■	■
2/4-stroke	■	■
Creep Start	■	■
Hot Start	■	■
Crater Filling	■	■
Adjustable Burn-back Time	■	■
Gas Pre/Post Flow	■	■
Digital V/A Meter	■	■
Gas Purge/ Wire Inching	■	■
Memory Set	3	10
Panel Lock, Limits		■
Load Customised Synergic Lines	With ESAT*	With ESAT*
Pre-programmed Synergic Lines	93	92
Synergic Pulse	■	■
MMA	MMA controls and outlet on wire feeder	MMA and gouging controls and outlet on wire feeder

* ESAB Service Tool

FOR MORE INFORMATION
GO TO ESAB.COM/ROBUST

ROBUST FEED

PSF TORCHES: MAXIMUM PERFORMANCE HAS ARRIVED.

Modernised **PSF torches** deliver superior performance and improved handling to help you get the job done like never before.

ENGINEERED FOR COMFORT

All PSF torches feature an ergonomic design that ensures a comfortable and firm hold while helping avoid hand fatigue. The larger PSFs, including the water-cooled models, have rubberised soft-grip areas plus knuckle joints and spring supports that improve flexibility to reduce wrist strain.

OUR MOST POWERFUL TORCH

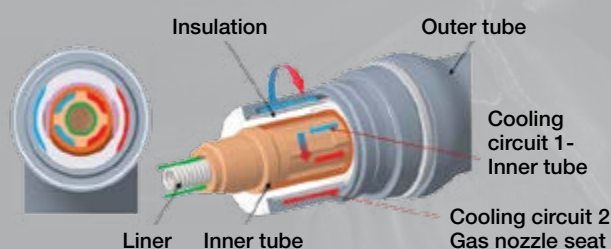
The new PSF 520W water-cooled torch — our most powerful yet — can take on the most demanding jobs. Its dual-circuit cooling system brings cooling water all the way to the seat of the gas nozzle, so your torch stays cooler and more comfortable with larger wires.

Other benefits include better wire feedability, longer consumables life, a more stable arc, lower spatter adhesion, easier cleaning and lower risk of shielding gas turbulence.

PREMIUM PERFORMANCE

We gave all of our PSF welding torches better wire feeding capabilities for a more stable arc and improved weld quality. While the front-end has been completely redesigned, the wear parts remain fully compatible with the time-proven heritage PSF wear parts. This includes long-lasting contact tips made from a premium CuCrZr alloy that resists wear so you can weld longer.

PSF DUAL-CIRCUIT WATER COOLING



2-circuit cooling principle



PSF Water-Cooled	PSF 420w	PSF 520w
Rated Output Mixed Gas	450 A at 100%	500 A at 100%
Rated Output CO ₂	450 A at 100%	500 A at 100%

PSF Gas-Cooled	PSF 260	PSF 315	PSF 415	PSF 515
Rated Output Mixed Gas	225 A at 60%	285 A at 60%	325 A at 60%	400 A at 60%
Rated Output CO ₂	250 A at 60%	315 A at 60%	380 A at 60%	450 A at 60%

FOR MORE INFORMATION
GO TO [ESAB.COM/PSF](https://www.esab.com/psf)

BUILT TO LAST. BUILT FOR COMFORT.

Designed for professionals, **SR-B** and **XCT-B 400w** high-performance torches make TIG welding a pleasure with their comfortable, compact and cooler operating design.

BETTER ERGONOMICS

When you wrap your fingers around these ergonomic torches, you'll immediately notice how their integrated soft grips keep the handle in place with minimal grip pressure. Precision Switch technology for comfortable On/Off control further reduces hand fatigue, while a ball joint on the back allows movement in all directions without torsion of the cable assembly.

SUIT YOUR APPLICATION

SR-B torches come in air-cooled (60% duty cycle) and water-cooled models (100% duty cycle), with or without a gas-valve and with an optional flexible head. Water-cooled models feature extra-large cooling channels that allow smaller torch neck-to-head dimensions to promote access in tight spaces and more precise bead placement. Compared to competitive torches, they offer higher duty cycle ratings, so the torch stays cooler in high-amperage, high arc-on time applications.

WELD HOTTER, STAY COOLER.

The new XCT-B 400w water-cooled torch features an even more compact head — yet it delivers an amazing 100 percent duty cycle at 315 amps for AC welding and 450 amps when DC welding. A unique collet design consolidates parts to deliver greater arc stability and more efficient thermal transfer. It keeps the electrode securely fixed, even under an extended high-amperage load.



The unique XCT collet also produces a smooth, laminar gas flow that eliminates the need for gas lenses.



SUPERCARGE YOUR PROFITABILITY

ESAB Digital Solutions is a complete suite of digital services that lets you harness the power of data across your entire fabrication process.

FIND NEW SOLUTIONS ACROSS YOUR ENTIRE FABRICATION WORKFLOW.

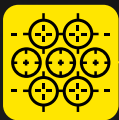


PLATE OPTIMISATION

Columbus® III

CAD/CAM nesting software for mechanised cutting that optimises plate usage and process setting, automatically delivering the best cut quality.



CUTTING PRODUCTIVITY

CutCloud™

Online-based software for recording, analysing, and reporting your cutting productivity data.

Digitally Enhanced Services

Remote video-enabled diagnostics services that minimise downtime by monitoring and predictively managing uptime.



WELDING PRODUCTIVITY

WeldCloud™ + WeldCloud Universal Connector

Online-based software for recording, analysing, – and reporting your welding productivity data – compatible with any brand power source.



QUALITY ASSURANCE

WeldQAS

Real-time monitoring system for weld quality assurance.

WeldScanner + WeldScanner Validator

Device that logs data, automatically measures and records arc characteristics, and validates any brand of welding equipment.



Maximise productivity – Track uptime and utilisation rate.

Ensure consistent quality – Monitor, validate and record weld quality.

Lower documentation costs – Automated data collection reduces paperwork.

Avoid downtime – Real-time information to predict maintenance intervals or identify equipment issues.

Connect effortlessly – Easily integrate with existing machines. 100% scalable. Accessed online from anywhere. Best-in-class user interface.

FOR MORE INFORMATION
GO TO [ESAB.COM/DIGITAL](https://esab.com/digital)

BUILT ON MICROSOFT + PTC.



Microsoft



ptc

SAVAGE A40: A STRIKING BALANCE OF FORM, FUNCTION AND VALUE.

Inspired by the radical SENTINEL™ A50, the new **SAVAGE A40** automatic welding helmet provides ideal functionality for the occasional and professional welder at an attractive price.

A BETTER VIEW

SAVAGE uses ESAB's ultra-clear True Color lens technology for a better view of the weld puddle and surrounding area. When precise bead placement counts, count on the brighter view and enhanced color definition with SAVAGE.

A BIGGER VIEW

You will also get a better view through SAVAGE's 1/1/1/2 optical class lens. Its 100 x 50 mm window increases spatial awareness and offers DIN 9 – 13 shade adjustment. Four sensors provide a high response, especially when welding out-of-position, while sensitivity and delay control let you adjust to various welding conditions.

GRIND MODE

Even while wearing a heavy glove, you can activate a shade 4 Grind Mode on the left side of the helmet, helping you stay more productive.

SAVAGE

A40



FOR MORE INFORMATION
GO TO [ESAB.COM/SAVAGE](https://www.esab.com/savage)

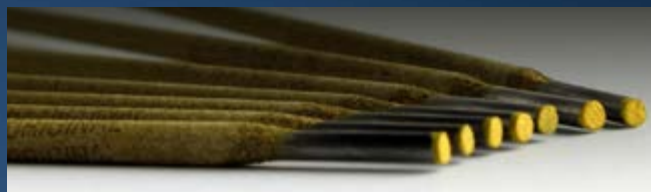
STRIKE GOLD WITH **OK® GOLDROX™**

Strike an arc and you will know you've struck it rich with **OK GoldRox**, a new rutile electrode with proven great welding performance and smart packaging design fit for purpose.

USER-FRIENDLY

OK GoldRox provides a stable arc that leaves almost no spatter and easy slag removal with minimal effort for faster clean-up. Using an electrode with good arc stability, coupled with decent puddle flow, helps in situations with poor fit up. OK GoldRox yields a flat bead profile with fine ripples and good appearance.

OK GoldRox is available in 2.0, 2.5, 3.2 and 4.0 mm diameters. ESAB offers OK GoldRox in 2.5 kg packages (1/2 the size of standard packages available in the market) and also in an even more convenient 1 kg package for smaller jobs and less waste.



BROAD APPLICATIONS

OK GoldRox works with AC or DC current (straight or reverse polarity), welds in all positions and creates a softer arc that works well for light to medium penetration welding. It produces particularly satisfying results for overhead welding of fillet welds, as well as lap joints and sealing runs.

The superior performance of OK GoldRox offers professional appeal. Typical applications include sheet metal, general fabrication on mild and medium steels, auto and truck bodies, root pass pipe applications, farm and construction equipment, repair and maintenance. OK GoldRox comes with the following approvals: ABS, BV, LR, DNV-GL, DB, VdTUV, and it will also be CE marked and UKCE marked for the UK.



OK®
GOLDROX™

FOR MORE INFORMATION
GO TO [ESAB.COM/GOLDROX](https://www.esab.com/goldrox)

COREWELD: HIGHER PRODUCTIVITY FOR **HIGH STRENGTH STEELS**

Just as high strengths steels enable better performance in mobile machinery and civil construction applications, Coreweld metal cored wires — including the new Coreweld 55 LT H4 — improves fabrication results for these users.



BEST PERFORMING WIRE

When critical applications call for strength and toughness, Coreweld 55 LT H4 offers best-of-category low-temperature performance you can count on.

- Impact toughness of 110 J at -60° C
- Yield strength of 595 MPa
- Tensile strength of 670 MPa
- ≤ 4 ml diffusible hydrogen

Produced and stocked in Europe, Coreweld 55 LT H4 is a fine tuned, lower alloy wire (1.3% Ni), which improves welder appeal with a smooth, stable arc at high welding speeds and good wet-out. It minimises spatter and silica islands, speeding post weld clean-up.

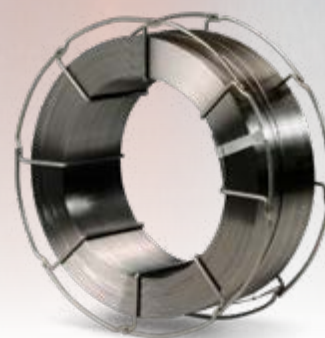
BOTTLENECK BREAKER

Coreweld metal-cored wires combine high deposition rates, high deposition efficiencies, high travel speeds, excellent penetration and ease of use. ESAB extended its Coreweld family to include wire that deliver sub-zero toughness for HSS applications that require minimum yield strength up to 900 MPa. We currently offer five wires, and more are on the way.

Coreweld HSS Wires	Notes
Coreweld 46 LS	Low silica; for mechanised & robotic use
Coreweld 46 LT H4	Yield strengths > 460 MPa at -60° C
Coreweld 55 LT H4	Yield strengths > 550 MPa at -60° C
Coreweld 69 LT H4	Yield strengths > 690 MPa at -60° C
Coreweld 89	Yield strengths > 890 MPa at -40° C

Available in diameters of 1.2, 1.4 and 1.6 mm, Coreweld delivers deposition rates as high as 8.0 kg/hour, a feat MIG/MAG solid wires cannot match. Check out these other benefits:

- High deposition rates and travel speeds
- No slag and almost no spatter
- Little to no post-weld clean up or cleaning between passes
- Excellent side-wall fusion and root penetration
- Ability to bridge part gaps without burnthrough
- Ability to weld thin materials at high amperages without burnthrough
- Capability to weld out-of-position with pulsed spray or short circuit transfer



FOR MORE INFORMATION
GO TO ESAB.COM/FILLERMETALS

REBEL™ EMP 205ic AC/DC: YES, IT TIG WELDS ALUMINIUM.

The first-ever TRUE all-process machine, **Rebel EMP 205ic AC/DC** delivers best-in-class performance in the most portable, durable, go-anywhere, weld-anything industrial package on the market today.

ALL PROCESSES – NO COMPROMISE!

Finally, a welder that offers a professional-grade arc in every mode and on every metal. ESAB added AC TIG capabilities without sacrificing superior arc quality or control. Rebel EMP 205ic AC/DC lets you:

- Use high frequency (HF) for non-contact TIG arc starts.
- Adjust the TIG arc for superior results on any application.
- MIG/MAG weld with steel, stainless or aluminium wires.
- Flux cored weld with gas-shielded and self-shielded wires.
- Seamlessly move between TIG and MIG/MAG welding thanks to dual gas solenoid switches – no need to remove torches or disconnect gas lines.
- MMA weld with every type of electrode.

CHOOSE YOUR CONTROL LEVEL

Fixed settings will not cut it in the industrial world. Using Rebel's signature TFT LCD color display, users can seamlessly switch between two modes of operation.

Advanced mode: Featured on all processes, Advanced mode lets you fine-tune parameters to match the application and optimise results.

Basic mode: A beginner-friendly approach to welding, Basic mode is available for MIG/MAG and TIG processes. All users do is choose material type and thickness and let the machine to do the rest. For example, our exclusive sMIG ("smart MIG") technology continuously learns and adapts to the operator's technique to provide a stable arc and superior welds.

INPUT VOLTAGE TOLERANCE

Rebel 205ic functions flawlessly on any input power voltage throughout its entire 90V to 270V input power range. Multi-voltage input power provides location flexibility, while its 25.5 kg weight makes it easy to move.

Rebel EMP 205ic Specifications

Maximum Output	MIG: 235 A / 26.0 V MMA: 180 A / 27.2 V TIG: 205 A / 18.2 V
Duty Cycle	MIG: 205 A / 24.3 V @ 25% MMA: 170 A / 26.8 V @ 25% TIG: 205 A / 18.2 V @ 25%
Output Range	5 - 235A
Bobbin Size	100 and 200 mm
Wire diameters	0.6 - 1.2 mm
Dimensions L x W x H	584 x 229 x 406 mm
Weight	25.5 kg



FULL-FEATURED TIG CONTROLS

Rebel 205ic AC/DC helps operators achieve better results by providing the type of advanced TIG controls found on industrial units. Through its colour TFT LCD interface, operators can adjust:

- Penetration or cleaning with AC wave balance control from 60 – 90% electrode negative (EN). More EN improves penetration, while reducing EN adds more “cleaning action” that removes aluminium oxide.
- Bead shape and profile with AC frequency control adjustable from 25 – 400 Hz. Higher frequencies narrow the arc cone to direct the arc at the root of the joint, increasing penetration and travel speeds.
- Amplitude offset. Independently adjust EN and EP amperage to direct more energy into the work piece and remove heat from the tungsten to create a smaller bead profile, improve penetration and reduce preheat on thicker material.
- Heat input by pulsing the DC TIG output between 0.1 and 500 Hz. Use pulsed DC TIG to control heat input on thin sections and stainless steel, narrow the weld bead profile and increase travel speed.
- Upslope to prevent excessive heat input during arc start and downslope to taper current at the end of a weld to help prevent crater cracking.

REBEL™



FOR MORE INFORMATION
GO TO ESAB.COM/REBEL

A FULL RANGE OF REBELS

When there is no such thing as a typical day, Rebel welders with their true multi-process output gives you the confidence to be ready for any job. Meet the rest of our go anywhere, weld anything Rebel family.



Rebel EMP 255ic and 320ic Our most industrial Rebels. They use 360 – 440V 3ph input power, weigh 31.4 kg. They accept 200 and 300 mm wire spools. Rebel 320ic is an ideal production welding system capable of running 0.8 to 1.4 mm solid wires and 0.8 - to 1.6 mm cored wires.



Rebel EMP 235ic Built for powerful flexibility, this Rebel accepts 90 – 270V input power, offers a maximum output of 240A/30V and weighs only 24 kg. It accepts 100, 200 and 300 mm wire spools and runs solid wires from 0.6 – 1.2 mm and cored wires from 0.8 – 1.2 mm.



Rebel EMP 215ic Our lightest and most portable Rebel, this unit accepts 90 – 270V input power, weighs a scant 21.5 kg and delivers a maximum output of 235A/26V. It accepts 100 and 200 mm wire spools and runs solid wires from 0.6 – 1.0 mm and cored wires from 0.8 – 1.2 mm.

GO ROGUE WITH RULE-DEFYING MMA PERFORMANCE

The days of entry-level mediocrity are over. With unconventional features, unprecedented performance, and an all-new industrial design, **Rogue** ushers in a new era of welding capability that will force you to rethink everything you expect from a portable MMA machine at this price point. Are you ready to go rogue?

BREAK AWAY FROM CONVENTION WITH THE RULE-DEFYING ROGUE

PERFORMANCE

Rogue's next-level technology gives you precise, professional, and consistent control for smooth, stable arc performance and low spatter levels across all types of MMA electrodes and weld positions. Adjustable hot start makes firing up your arc a breeze with even the most difficult electrodes. The adjustable arc force helps you increase penetration and prevent electrodes from sticking. Never before has an entry-level welder been packed with such high-quality performance

POWER

Throw away your preconceptions about welders in this class – Rogue's power stacks up against machines twice its price. Included in Pro models, Power Factor Control (PFC) technology allows for a highly efficient and steady arc that's resistant to power fluctuations. Rogue runs on 120 V or 230 V with flexible automatic input voltage compensation (90 – 270 V), which makes it ideal for both main and generator power. With up to 25% duty cycle at 200 A, Rogue lets you weld with a wider range of electrode diameters — up to 4 mm — so you can work more efficiently, make fewer passes and get the job done faster.

STRENGTH

No other machine at this price point comes close to matching Rogue's strength. Its robust and rigid fiberglass-molded housing is built to withstand impact after impact, in the shop or in the field. Rogue is durable and weather resistant, with an IP23S rating for use in tough outdoor applications. Like every ESAB machine, Rogue comes with our industry-leading three-year warranty for unbeatable peace of mind. Goodbye, cheaply constructed welders.

LIFT TIG OUTPUT

When applications demand more control over heat input or weld bead profile, use Rogue's Lift TIG output to weld steel, stainless and other ferrous metals. Lift TIG provides reliable arc starts without the use of high frequency. You can count on Rogue to deliver a stable DC TIG arc down to 10A for welding thin or delicate parts.

PORTABILITY

Rogue's compact and lightweight design makes it easy to carry from job to job. It weighs in at just 6.8 and 8.2 kg, and its sturdy handle and included shoulder strap make it more comfortable than ever before to go wherever you need to. Plus, its stable arc performance means you can use long extension cables to work in even the most remote locations without affecting weld quality. It is the definition of a portable workhorse.

USABILITY

Rogue has been tested in laboratories around the world to ensure it rises to global performance and usability standards. Its easy-to-use interface contains a large, precise digital display that can be easily read from up to 25 m away. The included remote control allows you to adjust current settings without needing to go back to the machine. No matter where you are working, Rogue simply welds well.

IT'S TIME TO JOIN THE ROGUE REVOLUTION

Now that you know about the game-changing, rule-shattering Rogue, the only decision you have left is choosing the one that is right for you.

ROGUE



PRODUCT RANGE AND SPECIFICATIONS

	Rogue ES 150i	Rogue ES 180i	Rogue ES 180i Pro	Rogue ES 200i Pro
Input Voltage	230 VAC ± 15% 50/60 Hz	230 VAC ± 15% 50/60 Hz	120/230 VAC ± 25% 50/60 Hz	120/230 VAC ± 25% 50/60 Hz
MMA Welding Output 25% Duty Cycle 60% Duty Cycle 100% Duty Cycle	150 A / 26.0 V 97 A / 23.9 V 75 A / 23.0 V	170 A / 26.8 V (20% duty cycle) 97 A / 23.9 V 75 A / 23.0 V	180 A / 27.2 V 116 A / 24.6 V 90 A / 23.6 V	200 A / 28.0 V 129 A / 25.2 V 100 A / 24.0 V
TIG Welding Output 25% Duty Cycle 60% Duty Cycle 100% Duty Cycle	150 A / 16.0 V 97 A / 13.9 V 75 A / 13.0 V	180 A / 17.2 V 116 A / 14.6 V 90 A / 13.6 V	180 A / 17.2 V 116 A / 14.6 V 90 A / 13.6 V	200 A / 18.0 V 129 A / 15.2 V 100 A / 14.0 V
Maximum Output	150 A	180 A	180 A	200 A
Open Current Voltage	63 V DC	63 V DC	78 V DC	78 V DC
Weight	6.8 kg	6.8 kg	8.25 kg	8.25 kg
PFC	No	No	Yes	Yes
Dimensions	403 x 153 x 264 mm	403 x 153 x 264 mm	403 x 153 x 264 mm	403 x 153 x 264 mm
Ordering Information	0700500076	0700500077	0700500078	0700500079



FOR MORE INFORMATION
GO TO ESAB.COM/ROGUE

MAXIMUM MOBILITY. INCREDIBLE POWER.

Cutmaster 40 offers an unprecedented combination of benefits. Discover how the best manual plasma cutter in its class helps you get more work done — in more locations.

MAXIMUM PORTABILITY.

Cutmaster 40 features an all-new ergonomic design for the best portability in its class – without sacrificing performance. It weighs only 10 kg, with multiple handles and carrying points that help it feel even lighter.

GREATER FLEXIBILITY.

With an incredible arc stretch, Cutmaster 40 can be used in unusual cutting positions while maintaining cut quality. It comes with a complete range of consumables out of the box for cutting and gouging, and it runs on 110–240 V power with automatic amperage adjustment.

INCREDIBLE PERFORMANCE.

Cutmaster 40 has remarkable power for a machine of its size. The legendary 1Torch™ allows for a best-in-class 12 mm pierce and cut capacity and an insane 25 mm max sever. With an extraordinary 40% duty cycle at 40 A, thanks to all-new hybrid cooling technology, your hands will give up before this machine does.

SERIOUS DURABILITY.

We put Cutmaster 40 in proven industrial-grade housing to ensure it can take a battering and keep performing. With an IP23 all-weather rating, Cutmaster 40 is ready to work where you need it to – rain or shine, day in and day out. Cutmaster 40 also comes with new Black Series consumables that last up to 60% longer before needing to be replaced.

A close-up photograph of the ESAB Cutmaster 40 plasma cutter. The machine is black with a prominent yellow octagonal panel on the side featuring the ESAB logo. A digital display on the front shows the number '40'. The machine is positioned on a dark, industrial workbench. In the background, a plasma torch is visible, and the overall scene is dimly lit, emphasizing the machine's rugged design.

CUTMASTER

NOW MADE IN EUROPE

To better serve the European market, ESAB has moved manufacture of Cutmaster 80-, 100- and 120-Amp manual plasma units to our facility in Opole, Poland.

This change allows us to ensure that Cutmaster systems built for the European market are available from stock in Europe, reducing delivery times and giving you certainty of supply. We will be better positioned to handle bulk orders and respond rapidly to urgent orders.



During 2020, we will continue to ship machines manufactured in Mexico as we deplete inventory. For further information, please contact your **ESAB Sales Representative.**

Specifications

Amperage Output	15–40 A, continuously adjustable
Recommended Cut	Up to 12 mm
Pierce Rating	12 mm
Maximum Sever	25 mm
Rated Duty Cycle	40% @ 40 A (20 amp or greater circuit) 60% @ 30 A 100% @ 20 A
Input Voltage	110–240V, 1ph, 50/60 Hz
Recommended Generator Size	8.0 kW output
Weight	10 kg
Dimensions LxWxH	460 x 200 x 320 mm
Torches for Cutmaster 40	SL60 1Torch (supplied) SL60QD 1Torch

FOR MORE INFORMATION GO TO
[ESAB.COM/CUTMASTER40](https://www.esab.com/cutmaster40)

VERSOTRAC EWT 1000

DESIGNED TO CONQUER YOUR JOBSITE.

We listened to welders. Then we went to the drawing board and created **Versotrac** — the most versatile and user-friendly tractor on the market for SAW, GMAW and Gouging.



VERSOARC EWH 1000 WELDING HEAD

Together with the new EAC10 controller and quick connectors, users can switch between SAW, GMAW and Gouging in seconds.

- Robust wire feed can weld with single wires up to 5 mm and up to 1000A @ 100 percent duty cycle.
- High productivity with twin wire SAW process.
- Memory functions on wire feed pressure and wire straightener reduces downtime.
- Toolless interaction on all major adjustments to aid setup.
- Closed loop encoder control system for precise wire feed speed control.

VERSOTRAC EWT 1000 TRACTOR

At last, a tractor system that recognises the portability needs of ship, barge, offshore, wind tower, and structural steel applications. Versotrac is a truly modular welding tractor, allowing you to take it anywhere. It is rugged, with modularised components that can be disassembled into smaller units to carry into confined spaces and then reassembled in minutes.

- Automatic weld head detection. Switch between SAW, GMAW and Gouging in seconds.
- Four and three wheel versions.
- Can be re-built for optimum beam welding positions (flat fillet).
- Adapted for both inverter based power sources and conventional DC and AC power sources.
- Toolless interaction and clear scales make it easy to change weld point position.
- New revolutionary wire spool handling system with memory functions on wire feed system reduces the time to change wire spools.

EAC 10 CONTROLLER

We gave Versotrac an entirely new and intuitive EAC10 controller to ensure ease of use. The simplified interface includes the functions you need for tractor and other light-automation applications, making more room on the display for important functions like real-time heat input so you can easily monitor and control weld quality. The remote controller lets you change settings from a comfortable position.

- Works with all current ESAB SAW power sources as well as most analog power sources on the market.

FOR MORE INFORMATION
GO TO [ESAB.COM/VERSOTRAC](https://www.esab.com/versotrac)

VERSOTRAC

MAXIMISE PRODUCTIVITY.

ESAB's industry-leading submerged arc welding wires and fluxes produce the desired mechanical properties with productivity- and quality-enhancing features like good slag detachability.



OK Autrod 12.22

OK Autrod 12.22 is a medium manganese-alloyed, copper coated steel wire for submerged arc welding in medium and high strength steels. It features increased Si content and is thus especially for neutral fluxes or in order to increase the fluidity of the molten pool. For structural steels, ship building steels, pressure vessel steels, fine grained steels, etc.



OK Flux 10.62 (Advanced Slag Release)

Agglomerated fluoride-basic flux for all SAW process variants (Tandem, Twin and ICE) in multi-pass applications and narrow gap joints. Produces weld metal with hydrogen contents maximum 5 ml/100 g. Excellent slag detachability, very strong grains, soft transitions to side walls and concave weld bead profiles. Consistent grain size distribution after recycling which maintains weld bead quality. When delivered in BlockPac (moisture protection) the hydrogen content is guaranteed for maximum 4 ml/100g. Fluxes in BlockPac can be stored under severe climatic conditions for extended periods.





EXATON – THE ONE NAME YOU NEED FOR STAINLESS AND NICKEL ALLOYS

ESAB Welding & Cutting Products has finalised the transition to the Exaton™ brand name for all welding filler metals involved with its 2018 acquisition of Sandvik Welding Consumables. Globally, all products now carry the Exaton name.

Importantly, only the name has changed. The performance and parameters of Exaton consumables remains the same, so there is no need to requalify weld procedures or specifications. Even the naming convention and article numbers (SKUs) remain the same, minimising the change for customers and distributors.

Exaton premium stainless, nickel and specialty alloys deliver premium performance in the world's most demanding segments, such as oil and gas, chemical processing, nuclear power generation and cryogenic applications. They offer higher strengths, corrosion resistance and service temperatures so that customers can explore deeper, use more corrosive media, extend service times and reduce part thickness.

Visit esab.com/exaton to learn more.

ESAB / esab.com



EXATON
AN ESAB BRAND